



## ABOUT SYNnex AUSTRALIA

Synnex Australia the largest distributor in the Australian market, providing a range of products and services including hardware, software, licensing and Cloud solutions.

The company is a division of Synnex Technology International Corporation, the largest IT distribution company in Asia Pacific region and ranked the third largest worldwide. Today, the worldwide strength of the Synnex group is reflected by our international market share positions. Synnex is the largest in Taiwan and Thailand, and among the top two distributors in China. Synnex is also a major player in Hong Kong, Indonesia, Japan and New Zealand.

Synnex is committed to provide Channel Partners with the best solution and services to stay competitive in today's global ICT business landscape. With the recent launch of the Synnex Cloud business in March 2016, the distributor is helping Channel Partners to build a recurring business model in the Cloud and driving digital transformation.

The Synnex Cloud Marketplace has a diverse portfolio that allows partners to provision IaaS and SaaS services on demand.

The company services a wide range of businesses in the ICT industry including SMB Resellers, System Integrators, Computer Retailers, Original Equipment Manufacturers, Corporate Retailers, National Retailers, VARs, MSPs and ISVs.

## CONTACTS

### Vertiv Australia & New Zealand

#### AUSTRALIA

**Head Office:**  
Suite A, Level 6, 15 Talavera Road,  
North Ryde, NSW 2113, PO Box  
149, Macquarie Park Business  
Hub, NSW 1670, Australia  
Phone: +61 2 9914 2900  
Fax: +61 2 9806 9550  
Toll Free: 1800 005 161  
Emergency Service: 1300 367 686

#### Canberra (ACT)

Phone: +64 3 339 2060  
Fax: +64 3 339 2063  
Toll Free: 0800 100 877  
Emergency Service: 0800 100 877

#### Melbourne (VIC)

Phone: 1800 005 161  
Emergency Service: 1300 367 686

#### Brisbane (QLD)

Phone: 1800 005 161  
Emergency Service: 1300 367 686

### Synnex Corporation Australia

**Melbourne Office:**

92 Carroll Road, Oakleigh South, VIC, 3167, Australia

#### Sydney Office:

14 Parramatta Rd, Lidcombe, NSW, 2141, Australia

#### Brisbane Office:

57 Luke street, Lytton, QLD, 4178, Australia

#### Perth Office:

13 Vale Street, Malaga, WA, 6090, Australia

Phone: 1300 100 100

Website: [www.synnexcorp.com](http://www.synnexcorp.com)

#### Perth (WA)

Phone: 1800 005 161  
Emergency Service: 1300 367 686

#### NEW ZEALAND

##### Auckland

Phone: +64 9 443 5495  
Fax: +64 9 444 0066  
Toll Free: 0800 100 877  
Emergency Service: 0800 100 877

##### Christchurch

Phone: +64 3 339 2060  
Fax: +64 3 339 2063  
Toll Free: 0800 100 877  
Emergency Service: 0800 100 877  
Email: [salescorp@vertivco.com.au](mailto:salescorp@vertivco.com.au)  
Website: [VertivCo.com](http://VertivCo.com)

### Liebert® PSA

Performance Power Protection for  
PC's and Office Equipment



#### Features and Benefits

- Boost and buck AVR to stabilize the input voltage
- Maximum back up at full load is 4 minutes
- Three to six battery-backed UPS outlets, depending on model size
- One to two surge-only outlets, differentiated by color
- USB communications / shutdown software and cable included
- Up to five minutes of battery backup time of full load
- RJ-45 port for data line surge protection
- 2 years warranty

#### Applications

- Desktop PCs
- Small Routers, Bridges and Hubs
- Point-of-Sale Terminals

### Liebert® GXT4

True On-line Double Conversion  
UPS with 0.9 Power Factor



#### Features and Benefits

- On-line double conversion UPS
- High Output Power factor(0.9)
- LCD display
- High efficiency (97%) in ECO Mode
- Expandable to 6 external battery modules
- Rail kit included
- 2 years warranty

#### Applications

- Network Computers
- Large Network Peripherals
- Network Storage Devices

#### Monitoring Software & Accessories

- Liebert Multilink
- Intellislot Webcard - IS-WBCARD (Std in 5.6 & 10kVA)
- Liebert Nform - NFORM-EXP
- Maintenance Bypass Switch
- External Battery Cabinet

### Liebert® ITA

Parallelable, Modular, Scaleable  
UPS with 0.9 Power Factor



#### Features and Benefits

- On-line double conversion UPS
- High Output Power factor(0.9\*)
- LCD display
- Supports parallel operation up to 4 units (3+1)
- Efficiency up to 94%
- Backup time prolonged through cascaded connection of large capacity battery bank
- 2 years warranty

#### Applications

- Small Computer Rooms requiring long backup time (>30 min)

#### Shutdown & Monitoring Software

- SiteMonitor
- SNMP /SIC card
- RDU-SIC card

\*6kVA 0.8 Output PF

### Liebert® GXT MT+

Compact Mini Tower UPS for High  
Performance Power Protection



#### Features

- True on-line double-conversion technology
- DSP technology guarantees high performance
- 0.8 Output Power Factor
- Wide input voltage range (110-300 VAC)
- 0.99 input power factor correction
- 50Hz/60Hz frequency converter mode
- Configurable to energy saving mode (ECO)
- Programmable power management outlets
- Emergency power off function (EPO)
- Generator compatible
- Charger capacity expansion to 8A for long-run models
- SNMP/USB/RS-232 communications
- 3-stage extendable charging design for optimized battery performance
- Extended runtime capability by building up additional battery resources
- Maintenance bypass available
- Optional N+X parallel redundancy

#### Applications

- Small-size Data Center
- Telecommunication Equipment
- VoIP
- Small Office Network
- Computer Rooms
- Process Automation Equipment
- Network Storage Devices

### Liebert® NXC

Compact and Reliable Power in a  
Fully Integrated Packaged Solution



#### Features and Benefits

- 0.9 output power factor
- On-line Double conversion with high efficiency over 94%
- Integrated battery compartment capable of up to 60 mins. of integrated autonomy
- Easy site installation and configuration
- Ecomode efficiency up to 98%
- High capacity battery charger
  - 10-20kVA ~ 4.5kW
  - 30-40kVA ~ 6kW
- Input/output and bypass circuit breakers
- Integrated manual bypass
- Integrated parallel load bus and synchronization port (LBS)

#### Applications

- Medical facilities
- Laboratories
- Office facilities
- Retail brands

### Liebert® NX Series

Parallelable, Modular, Scaleable UPS  
with 0.9 Power Factor



#### Features and Benefits

- Best-in-class input current harmonic distortion of less than 3%
- Capability to handle 0.9 pf loads
- Stratified cooling techniques
- Versatile and simultaneous communication facilities
- Compact UPS footprints
- Capability to handle 100% unbalanced loading
- Provides up to 96% efficiency
- Parallelable up to four units

#### Applications

- Server Rooms and Mid-sized Data Centres
- Telecommunication (fixed, WLL & mobile) billing and reporting systems
- Networks (LAN, MAN & WAN)
- Industrial Process and Motion Automation for Mid-sized Plants
- Medical Diagnostic/Imaging Equipment

## UPS Accessories



### Intellislot Webcard

Web Management & Network Monitoring



### Rackmount Kit

Guide rail kit for rack mounting of UPS



### Liebert® MicroPOD

Power Output Distribution &  
Maintenance Bypass Switch



### Liebert® LTS

Automatic Transfer Switch  
(10A C14 Input, 6 way C13 Outlets)

## AC Power / PDU



### MPI Intelligent PDU

Monitored and Controlled PDU Operation

- Single-phase input that supports strip / branch-level metering or strip / branch -level metering and outlet switching
- Measures and monitors voltage, current (branch), frequency, power (kW), energy consumption (kWh) and power factor.
- Threshold / alert capabilities provide preemptive notification of any impending overload issues before they occur
- Supports external environmental sensors such as temperature, humidity, cabinet door status, water leakage and infrared motion sensors for notification of any impending environmental issues
- Remote switching capability to power on/off outlets (Only for Switched PDU)
- Highly compatible with multiple management software platform including RDU-A G2 and RDU-M



### Liebert® MPH2

Monitored and Controlled PDU Operation

- Extensive measurement functions (power, current, voltage and energy), with high measurement accuracy of up to± 1%
- Provides compatible monitoring platform for Liebert MPH and Liebert MPX, offering seamless operation if deployed together
- Controls and manages individual receptacles: shuts down non-essential equipment during power outages maximizing availability and back-up power
- Industry-leading operating temperature: up to 55°C
- Predicts over-current conditions before being critical
- Up to 4 Liebert MPX/MPH can be controlled via one IP address



### Liebert® MPX

Modular PDU with Monitored and Controlled  
PDU Operation

- The Liebert MPX is a modular PDU; input and output models can be flexibly configured as required
- Allows user to add individual hot-swappable modules for capacity as demand increases
- Controls and manages individual receptacles and or groups of loads and devices; shuts down non essential equipment during power outage
- Expanded branch overload protection, minimizes threat of cascading PDU overload
- Employs energy efficient receptacle control technology
- Output modules can be changed during running operation; no downtime

### Liebert® CRV

Intelligent Thermal Management for  
Data Centre Equipment



600 mm



300 mm

#### Key Features

- High efficiency at full and part load
- Installs within the row of racks
- Variable speed EC fans and variable capacity scroll compressor
- Liebert iCOM controls deliver automatic performance optimization
- Available in 600 mm and 300 mm wide
- Field adjustable air baffles

## Thermal Management

#### Benefits

- Horizontal airflow cooling design is suitable for non-raised or raised floors.
- Air, water, and chilled water systems available.
- Adjustable airflow baffles maximise cooling to rack equipment, allowing the system to be positioned within the row or at the end of the row.
- Multiple units communicate with each other to improve system performance and reduce energy consumption
- Up to 10 racks per cooling unit may be monitored to improve system performance and report rack temperatures

#### Applications

- Installs at the ends or within the row of racks on non-raised or raised floor applications
- Ideal for hot/cold aisle configurations
- Optimal performance when used with SmartAisle

### Liebert® DM

High Performance, Sensible Cooling for  
Small Computer Rooms and Network Closets



#### Variants

- Air Cooled up to 12kW is max DM size
- Chilled Water up to 25kW capacity

#### Key Features

- Energy saving mode available
- Load sharing and duty cycling
- Provides consistent and stable operating environment 24 x 7 x 365
- Low mean time to repair (MTTR)
- Standard RS485 port for monitoring
- Highly efficient cooling system
- Network management via SMTP/SNMP/HTTP
- Ultra wide ambient temperature range from -10 to +46°C
- High sensible heat ratio with scroll compressor technology

#### Applications

- Small and medium sized computer rooms
- UPS and battery rooms
- Outdoor electronic and communication equipment rooms
- Transformer stations, substations

## Access & Control

### Avocent® LCD Console Trays

Rack Management in 1U Space



#### Key Features

- Local Rack Console
- Large Screen: 16x9 18.5" with variable resolutions for optimal performance
- Form Factor: Trays are easy to access, yes lock securely in and only 1U preserving rack space
- KVM Compatibility: LRA Consoles are compatible with all Avocent® data centre KVM switches
- On-Screen Display: Easy-touch intuitive design in multiple languages
- Provides conventional access and control in the data centre for emergencies as well as extended use
- Ease of use: Convenient, full 103-keys keyboard with a full number pad
- Environmentally responsible: Low power usage during operation and standby
- Integrated KVM switch options with 8- or 16-port, local and/or remote access to servers

### Avocent®

### AutoView KVM Switch

UPS and PS/2 KVM Switching Built for SMB Server  
Room Environments



#### Key Features

- **Local Port:** Support for USB and/or PS/2 user keyboards and mice.
- **Single Solution:** Support for USB, PS/2, Sun and serial target devices in a single solution.
- Graphical, Multilingual OSD: Advanced, graphical OSD eases system configuration and server selection.
- **Space-Saving:** CAT-5, thin cabling saves space in the rack and allows up to a 100-foot distance between the server and the switch.
- **Intelligent Cabling:** Server interface modules and integrated access cables automatically assign and retain unique server names for each attached server.
- **Powerful User Access Control:** An administrator can grant KVM access to only certain users. The administrator can also limit KVM access to only specific targets on the switch. The AutoView 2030 switch supports smart card/CAC authentication to target devices, enabling the extension of two-factor authentication requirements.

### Avocent® Universal Management Gateway

All-in-one digital KVM, Service Processor  
and Serial Management Appliance



#### Features and Benefits

- Comprehensive DCIM platform in a single pane of glass
- Convenient single U chassis – reduced rack space and footprint
- Complete connectivity (IPMI, SNMP, OPC, Modbus, BACnet, Velocity)
- Physical sensor aggregation
- Easy installation across various remote access technologies
- Up to 40 simultaneous KVM sessions
- Up to 1024 service processors; wide variety of servers managed
- Up to 40 full auto-sensing ports
- KVM and SPM capability per port (using the UMIO-V2)
- Data collection – up to 10,000 data points per minute
- Real-time information across IT and facilities

## Monitoring



### Liebert® RDU-A G2

Intelligent Monitoring Platform for Data Centre Facilities

#### Key Features

- Intelligent monitoring hardware that combines monitoring of equipment, environment and safety of the infrastructure
- Flexible structural design enabling customized configurations according to specific requirements
- Communication gateway for the Liebert RDU-M, giving IT administrators a comprehensive view of the IT infrastructure up to the equipment level
- Allows administrators to perform comprehensive monitoring of the health and status of the equipment, view historical information and transmit controls or commands via a secure web page
- 3rd party communications: SNMP, Modbus 485, contact closure

## Racks & Integrated Solutions

### Vertiv SmartCabinet™

Intelligent, Integrated Infrastructure Solution  
in an Enclosure



#### Key Features

- **Fully integrated:** Power, cooling, monitoring and security features for IT applications
- **Dust protection and noise insulation:** Fully closed operation, cold/hot air is circulated within the rack for better temperature and humidity control, expanding life-span of IT equipment, low noise level. Highly suitable for office environment
- **Highly Efficient:** Built-in UPS and cooling equipment that uses DC frequency conversion, resulting to energy savings
- **User-friendly interface:** Large 7-inch LCD touch panel that allows for easy access to system status/alarms/ setting
- **Fast deployment:** Compared to traditional computer room build
- **Central Management:** optional feature of RDU-M that provides central management of multiple SmartCabinet™ sites

### S-Series

Superior Rack Solution



#### Key Features

- Strong and durable solid frame that can hold up to 1200KG static load
- 78% open high perforated doors for optimal air flow
- Convenient tool-less installation of cable and air flow management
- Seismic solution is available for critical application
- Fast deployment levelling feet
- 3 point swing lock

#### S-Series Rack includes:

- Single arc mesh front door
- Double flat rear mesh doors
- 3 point swing lock
- Roof top with cable entry plates
- 1 pair of side panels. Optional locking version available.
- 4 x (19") EIA-310 vertical mounting rails
- 4 fast deploying levelling feet and 4 casters
- 42U vertical cable tray for dual PDU mounting x 2
- All rack panels are inherently grounded
- 50 sets of captive M6 nuts and M6 screws
- Integrated baying kit
- Open bottom area (optional cover)



VERTIV™  
VertivCo.com



www.synnex.com.au



# INDUSTRY LEADING IT INFRASTRUCTURE AND MANAGEMENT SOLUTIONS

## Environmental Monitoring

Liebert® RDU-A™ G2



- Monitoring of the health and status of the equipment
- Environment temperature and humidity
- Transmission of control or commands to the equipment and parameter setting
- Data and logs of historical information of alarms and notifications

## Intelligent PDUs

Liebert® MPH2™

- Outlet monitoring
- Switchable
- Redundancy
- Temperature & Humidity

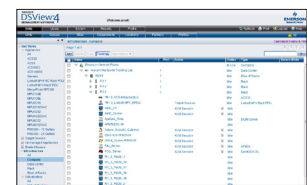
## Thermal Management

Liebert® CRV

- Intelligent thermal management
- In-the-row configuration
- Raised or non-raised floors
- Chilled or DX
- 10kw – 30kw
- 300mm wide

## Centralised Access and Control

Avocent® DSView Management Software™



- Secure, remote, centralised data centre management
- Multi-device support
- Virtual media support
- Integrated solution for KVM and power control
- Multi-platform support
- Flexible authentication / access control

## Rack Power Management

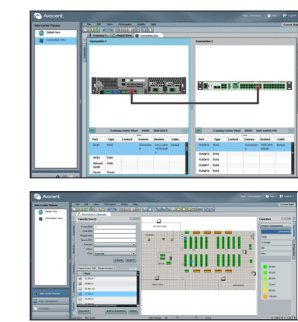
Avocent® Rack Power Manager™

- Measure and track power costs
- Review historical capacity and consumption reports
- Protection against downtime
- Accurate planning



## Visual Capacity Planning

Avocent® Data Centre Planner™



- Inventory management
- Configuration management
- Capacity tracking
- Reporting
- Intuitive visual interface

## LCD Console

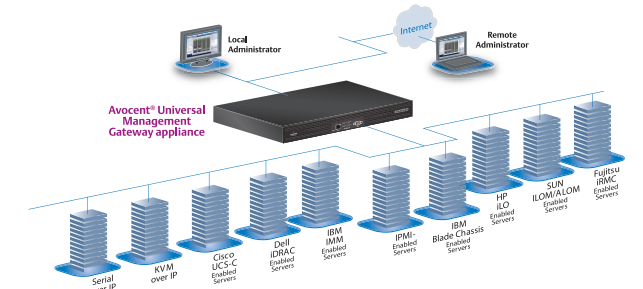
Avocent® LCD Console Tray

- High Quality 17" & 19" (1280x1024)
- USB Pass-thru
- 8/16 port digital KVM

## Remote Control/Management

Avocent® Universal Management Gateway™

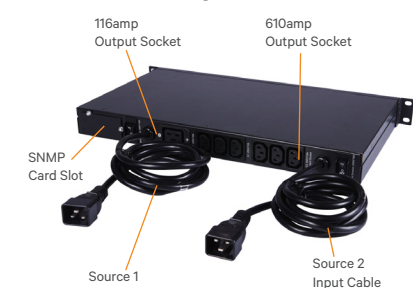
- All-in-one digital KVM, Service Processor and Serial Management appliance
- Closed loop control
- HP iLO, DRAC, RSA, etc.



## Transfer Switch

Liebert® LTS™

- Redundant power for Single Chord Devices
- Full DSP Control
- Remote management via SNMP



## Rack Mounted Uninterruptible Power Supply (UPS)

Liebert® GXT4™ On-Line UPS

- True Online double conversion
- 1 – 20 kVA
- Extended battery packs for long runtime

Rack - Back View

Rack - Front View

# QuickUPS

Reference guide for UPS Solutions of Vertiv



★ Best for Desktop Computers

## Line-Interactive UPS

### Liebert® PSA

500, 650, 1000, 1500VA

Feature Rich UPS with Surge Protection and Monitoring

#### Features and Benefits

- Boost and buck AVR to stabilize the input voltage
- Three to six battery-backed UPS outlets, depending on model size
- Surge Protection - one to two surge-only outlets, differentiated by color
- USB communications / shutdown software and cable included
- Up to five minutes of battery backup time of full load
- RJ-45 port for data line surge protection
- 2 years warranty

#### Applications

- Desktop PCs
- Small Routers, Bridges and Hubs
- Point-of-Sale Terminals

#### Shutdown & Monitoring

- Software
  - Liebert Multilink

Runtime Chart (minutes)

Load (VA)	500VA	650VA	1000VA	1500VA
200	18	20	50	65
400	5	7	18	25
600	-	4	10	14
800	-	-	7	10
1000	-	-	4	7
1200	-	-	-	5
1400	-	-	-	4



★ Best for Networks

## Line-Interactive UPS

### Liebert® PSI

750, 1000, 1500, 2200, 3000VA

Industry Leading UPS with 0.9 PF, Pure Sinewave Output for Business-Critical Applications

#### Features and Benefits

- More than three (3) mins of internal battery backup time at 100% load
- Boost and buck AVR to stabilize the input voltage
- High 0.9 power factor
- Liebert Multilink software
- 8 to 9 battery-backed outlets
- Rack / tower convertible with rotatable display panel
- 2 years warranty

#### Applications

- Network Computers
- Servers
- Computer Rooms
- Network Storage Devices

#### Monitoring Software

- Liebert Multilink
- Liebert IntelliSlot Web Card3

Runtime Chart (minutes)

Load (%)	750VA	1000VA	1500VA	2200VA	3000VA
10	84	93	76	82	76
20	45	47	32	44	32
30	25	26	17	19	17
40	15	15	12	14	12
50	11	12	9	11	9
60	9	9	7	9	7
70	7	7	5	7	5
80	5	6	4	5	4
90	4	5	3	4	3
100	4	4	3	3	3



★ Best for Computer Room

## On-line UPS

### Liebert® ITA

5000, 6000, 10000, 16000, 20000VA

Parallelable, Modular, Scaleable UPS with 0.9 PF

#### Features and Benefits

- Power factor 0.9\*
- Supports parallel operation up to 4 units (3+1)
- Backup time prolonged through cascaded connection or large capacity battery bank
- 92%-94% efficiency
- 10A external charger available for ITA 5/6/10kVA
- Parallel POD available
- ITA 5/6KVA - 2 years standard warranty
- ITA 10/16/20KVA - 1 year standard warranty
- LCD display

Runtime Chart (minutes)

Load (%)	5000VA	1000VA	1600VA	2000VA
20	60	60	90	60
40	25	25	35	25
60	13	13	18	13
80	8	8	12	8
100	5.5	5.5	8	5
# of battery cabinets	1	2	4	4

#### Applications

- Small Computer Rooms requiring long backup time (>30 min)

#### Monitoring Software

- SiteMonitor
- SNMP /SIC card
- RDU-SIC card

External batteries available



★ Best for Data Centres

## On-line UPS

### Liebert® APS

5-20kVA

Flexible, Efficient Modular UPS for Row-Based Applications

#### Features and Benefits

- Capacity on demand with FlexPower™ core modules that allow you to change capacity as needed in 5kVA increments - without powering down
- Module-level redundancy
- User installable, hot-swappable capacity and battery modules
- Internal redundancy capability (N+2/20kVA) and no single point of failure
- Integral battery monitoring
- Internal wrap-around maintenance bypass and Frame-level bypass
- 10A charger module available

#### Applications

- Small-to-medium-sized data centres
- Network closets
- VoIP



★ Best for Networks

## On-line UPS

### Liebert® GXT4

700, 1000, 1500, 2000, 3000VA

True On-line Double Conversion UPS with 0.9 PF

#### Features and Benefits

- On-line double conversion UPS
- High output power factor (0.9)
- Intellislot for WEB/SNMP management card
- 2 years warranty

#### Applications

- Network Computers
- Large Network Peripherals
- Network Storage Devices

#### Shutdown & Monitoring

- Liebert Multilink
- Intellislot Webcard - IS-WEBCARD
- Liebert Nform - NFORM-EXP
- Maintenance Bypass Switch
- External Battery Cabinet

Runtime Chart (minutes)

Load (%)	700VA	1kVA	1.5kVA	2kVA	3kVA
10	105	91	112	81	91
20	62	38	51	37	39
30	37	31	34	23	23
40	32	23	23	16	16
50	27	17	18	12	12
60	22	14	14	9	9
70	18	11	11	7	7
80	15	9	9	5	5
90	13	8	7	4	4
100	11	6	6	3	3

External batteries available



★ Best for Computer Room

## On-line UPS

### Liebert® GXT4

5000, 6000, 10000VA

Compact UPS Systems For High Power Network Rack Applications

#### Features and Benefits

- High power factor in all models (0.8pf for 5-6kVA and 0.9pf for 10kVA)
- USB communication, built-in dry contact terminals and EPO
- Optional matching size external battery cabinet
- Comes with removable Maintenance Bypass POD as standard

#### Applications

- Network Computers
- Servers
- Computer Rooms
- Network Storage Devices

#### Monitoring Software

- Liebert Multilink
- Intellislot Webcard - IS-WEBCARD
- Liebert Nform - NFORM-EXP
- External Battery Cabinet

Runtime Chart (minutes)

Load (%)	5000VA	6000VA	10000VA
10	105	97	81
20	52	47	39
30	40	33	22
40	27	22	15
50	21	17	11
60	17	14	9
70	14	11	7
80	12	9	5
90	10	8	4
100	9	6	3

External batteries available



★ Best for Data Centres

## On-line UPS

### Liebert® NXC

10, 20, 30, 40kVA

Compact and Reliable Power in a Fully Integrated Packaged Solution

#### Features and Benefits

- 0.9 output power factor
- On-line Double conversion with high efficiency over 94%
- Integrated battery compartment capable of up to 60 mins. of integrated autonomy
- Easy site installation and configuration
- Ecomode efficiency up to 98%
- High capacity battery charger
  - 10-20kVA - 4.5kW
  - 30-40kVA - 6kW
- Input/output and bypass circuit breakers
- Integrated manual bypass
- Integrated parallel load bus and synchronization port (LBS)

Autonomy time (in mins.)\*

Internal Battery Configuration	10kVA	20kVA
1 x 32 x 9AH	8	n/a
2 x 32 x 9AH	23	8
3 x 32 x 9AH	42	15
4 x 32 x 9AH	57	23
Internal Battery Configuration	30kVA	40kVA
1 x 38 x 34AH	25	16

#### \*Notes:

1. Longer back-up time is available. Please consult Emerson representative for proper configuration.
2. Autonomy time is based on 100% load and 0.9 UPS Output Power Factor.
3. Condition applies.

Application Note: \*Properly size up UPS by taking load Power Factor Correction (PFC) into consideration (if applicable).



VertivCo.com



www.synnex.com.au



# QuickUPS

Reference guide for UPS Solutions of Vertiv



## ACCESORIES



**SNMP Management Card**  
for Network Monitoring



**Intellislot Webcard**  
Web Management & Network Monitoring



**Rackmount Kit**  
Guide rail kit for rack mounting of UPS



**Liebert® MicroPOD**  
Power Output Distribution  
& Maintenance Bypass Switch



**Liebert® LTS**  
Automatic Transfer Switch  
(10A/16A/32A models available)

## SERVICE OFFERINGS



**Start up**  
Guarantees that the UPS is running at optimum performance



**On-Site Labor**  
Immediate access to on-site support whenever required



**Extended Warranty**  
Extends the useful life of the equipment



**Preventive Maintenance**  
Promotes higher reliability and reduces risk of downtime



**Comprehensive Maintenance**  
Promotes peace of mind with equipment maintenance



**Data Centre Audit**  
Provides a clear picture of the current status and health of the IT infrastructure compared with industry best practices.



**Battery Monitoring**  
Assures that batteries are in good health, monitored on-line.



**Remote Monitoring Service**  
Round the clock monitoring of the IT facility with the help of a monitoring expert

## Introducing the Asia Channel App from VERTIV™

The Asia Channel App is your one stop access to Vertiv resources and tools all in your mobile device. Access the information you need even when you're on the go.



### What's inside the Asia Channel App?

- UPS Sizing Tool Calculator
- Get the latest promo and literature updates
- Contact to our Corporate offices and Key Distributor Partners
- Exclusive access to resources\*

*\*Username and password required, contact an Emerson representative for more details*

**Available on Android smartphones and iPad tablet devices.**

For Android, visit: [onezineapps.com/apps/emerson-android](http://onezineapps.com/apps/emerson-android)

For iOS, visit: [onezineapps.com/apps/emerson/](http://onezineapps.com/apps/emerson/)

## POWER FACTORY ANALOGY

Why does high power factor matter to me?

### Beer Drinkers' Power Factor Analogy (Reactive Power = Electrical Froth)



Real Power (Watts) = Apparent Power (VA) X Power Factor (PF)

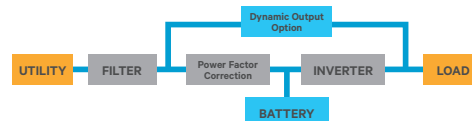
## WHY CHOOSE ON-LINE DOUBLE CONVERSION UPS FOR CRITICAL DATA CENTRE APPLICATIONS

- Provides highest level of protection by effectively isolating the load from power problems (e.g. frequency transients, spikes input AC source faults, and sags and surges)
- Continuous load protection from inverter
- Precise regulation of the output voltage and output frequency
- Instantaneous transfer to stored-energy mode in the event of an AC-input supply failure
- Protects networks from subtle noise and harmonics
- With plug-and-play network communications for easy connection to network management systems



**Recommended for:**

- Servers and storage devices
- Computer rooms
- Midsize data centres
- Voice and data servers
- LAN and WAN servers



## CONTACTS

### Vertiv Australia & New Zealand

#### AUSTRALIA

##### Head Office:

Suite A, Level 6, 15 Talavera Road, North Ryde, NSW 2113, PO Box 149, Macquarie Park Business Hub, NSW 1670, Australia  
Phone: +61 2 9914 2900  
Fax: + 61 2 9805 9550  
Toll Free: 1800 005 161  
Emergency Service: 1300 367 686

##### Canberra (ACT)

Phone: 1800 005 161  
Emergency Service: 1300 367 686

##### Melbourne (VIC)

Phone: 1800 005 161  
Emergency Service: 1300 367 686

##### Brisbane (QLD)

Phone: 1800 005 161  
Emergency Service: 1300 367 686

#### Perth (WA)

Phone: 1800 005 161  
Emergency Service: 1300 367 686

#### NEW ZEALAND

##### Auckland

Phone: +64 9 443 5495  
Fax: +64 9 444 0066  
Toll Free: 0800 100 877  
Emergency Service: 0800 100 877

##### Christchurch

Phone: +64 3 339 2060  
Fax: +64 3 339 2063  
Toll Free: 0800 100 877  
Emergency Service: 0800 100 877

Email: [salesenp@VertivCo.com.au](mailto:salesenp@VertivCo.com.au)

Website: [VertivCo.com](http://VertivCo.com)

### Synnex Australia

#### Melbourne Office:

92 Carroll Road, Oakleigh South, VIC, 3167, Australia

#### Sydney Office:

14 Parramatta Rd, Lidcombe, NSW, 2141, Australia

#### Brisbane Office:

57 Luke street, Lytton, QLD, 4178, Australia

#### Perth Office:

13 Vale Street, Malaga, WA, 6090, Australia

Phone: 1300 100 100

Website: [www.synnex.com.au](http://www.synnex.com.au)